

# Purple Wildflower Guide

by Northwest Hiker



Common  
Camas



Grass  
Widow



Grass  
Widow



American  
Sawwort



Oaks Toothwort  
(long leaves)



Slender Toothwort  
(short leaves)



Western  
Corydalis



Western  
Corydalis



Subalpine  
Daisy



Western  
Aster



Leafy  
Aster



Spreading  
Phlox



Western Longspur  
Violet



Monkshood



Fairy Slipper



Oregon  
Flag Iris



Showy  
Jacob's Ladder



Common Harebell  
Bluebell



Howell's  
Violet



Western  
Hound's Tongue

# Purple Wildflower Guide

by Northwest Hiker



**Columbia  
Kittenails**



**Naked  
Broomrape**



**Forktooth  
Ookow**



**Sagebrush  
Violets**



**Tomcat  
Sand Clover**



**Thread-leaf  
Phacelia**



**Slender-leaved  
Phacelia**



**Filaree**



**Doves Foot  
Geranium**



**Farewell  
to Spring**



**Nightshade**



**Taper-tip  
Onion**



**Clasping  
Henbit**



**Coast Hedge  
Nettle**



**Poison  
Larkspur**



**Roberts  
Herb Geranium**



**Shooting  
Star**



**Sickle-pod  
Rock Cress**



**Bicolored  
Cluster Lily**



**Western  
Meadowrue in seed**

# Purple Wildflower Guide

by Northwest Hiker



Cow Vetch



American Vetch



Vetch



Wild Pea



Candy Flower



Columbia Lewisia



Columbia Desert Parsley



Honesty



Self Heal



Self Heal



Nodding Onion



Harvest Brodiaea



Cascades Penstemon



Cardwell's Penstemon



Shrubby Penstemon



Early Blue Violet



Farewell to Spring



Lyall's Anemone



Bachelor Button



Lupine

# Purple Wildflower Guide

by NorthwestHiker



Foxglove



Ground Ivy  
Creeping Charlie



Varied-leaf  
Collomia



Purple Flowered  
Honeysuckle



Elder Berries



Domestic  
Lilac



Western  
Sweetvetch



Mountain  
Aster



Elephant Head  
Lousewort



Purple  
Campion



Bleeding  
Hearts



Nodding  
Onion



Bird-beak  
Lousewort



Clypso  
Fairyslipper



Blue eyed  
Mary



Showy  
Polemonium



Silky  
Phacelia



Common  
Phlox



Clarkia



Idaho blue  
eyed Grass

# Purple Wildflower Guide

by NorthwestHiker



Creeping Charlie



Midget Phlox



Rosey Twisted Stalk



Thread-leaf Phacelia



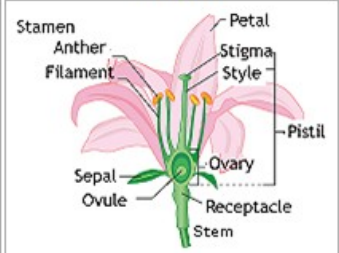
Slender Clarkia



Dagger Pod



Mahala Mat



flower parts